

Victorian Architecture in Cape May

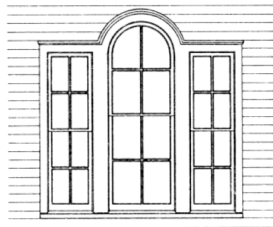
MID-ATLANTIC CENTER for the ARTS (MAC)

a non-profit cultural organization
609-884-5404 ~ 800-275-4278
www.capemaymac.org



General Victorian Features (1840-1910)

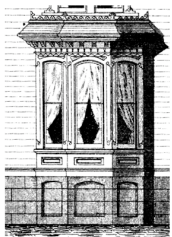
Palladian Window
(3-part)



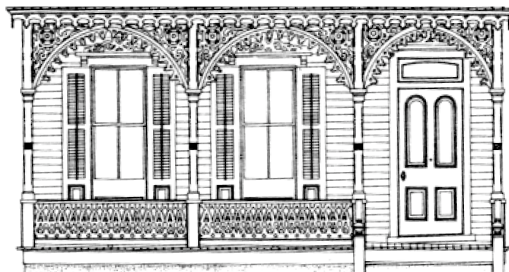
Roof
Ornaments
(Acroteria)



Bay Window



Gingerbread Trim

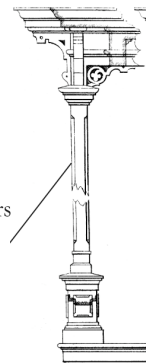


Italianate Style (1840-1885)

Look for...



Brackets under
Cornices



Chamfered Corners
on Porch Posts



Cupolas (a.k.a. Belvederes)

Gothic Revival Style (1835-1875)

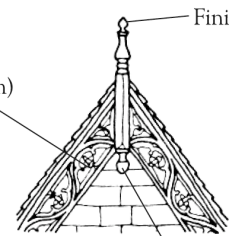
Look for...

~ Board-and-Batten Siding



Pointed-Arch
Windows
and Doors

Vergeboards
(gingerbread trim)
under eaves



High-Pitched Center Gable

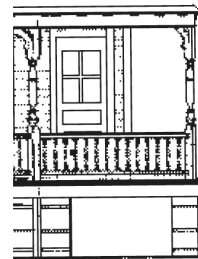
Pendants

Queen Anne Style (1875-1910)

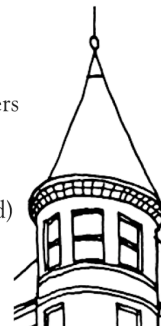
Look for...

~ Patterned Shingles
(e.g. fish-scale, shark-tooth)

Turned
Porch Posts and Trim



Corner Towers
or Turrets
(Round or
Polygonal
- many-sided)



Stick Style (1865-1885)

Look for...

Jerkin-Head Roof
and/or Dormers

Stick-like grid on
Wall Surfaces

Stick-like
Brackets
on Porch



Pent (or Shed) Roofs on Dormers, Porches, Bays

Mansard Style (1855-1885) a.k.a. Second Empire Style

Look for...

Concave
Mansard
Roof

Convex
Mansard
Roof



Shingle Style (1880-1915)

Look for...

~ Surfaces covered with shingles
~ Simple stylistic details (often Colonial)

Colonial Revival Style (1885-1915)

Look for...

Large
Dormers

Round, Smooth
Columns
(often clustered)

